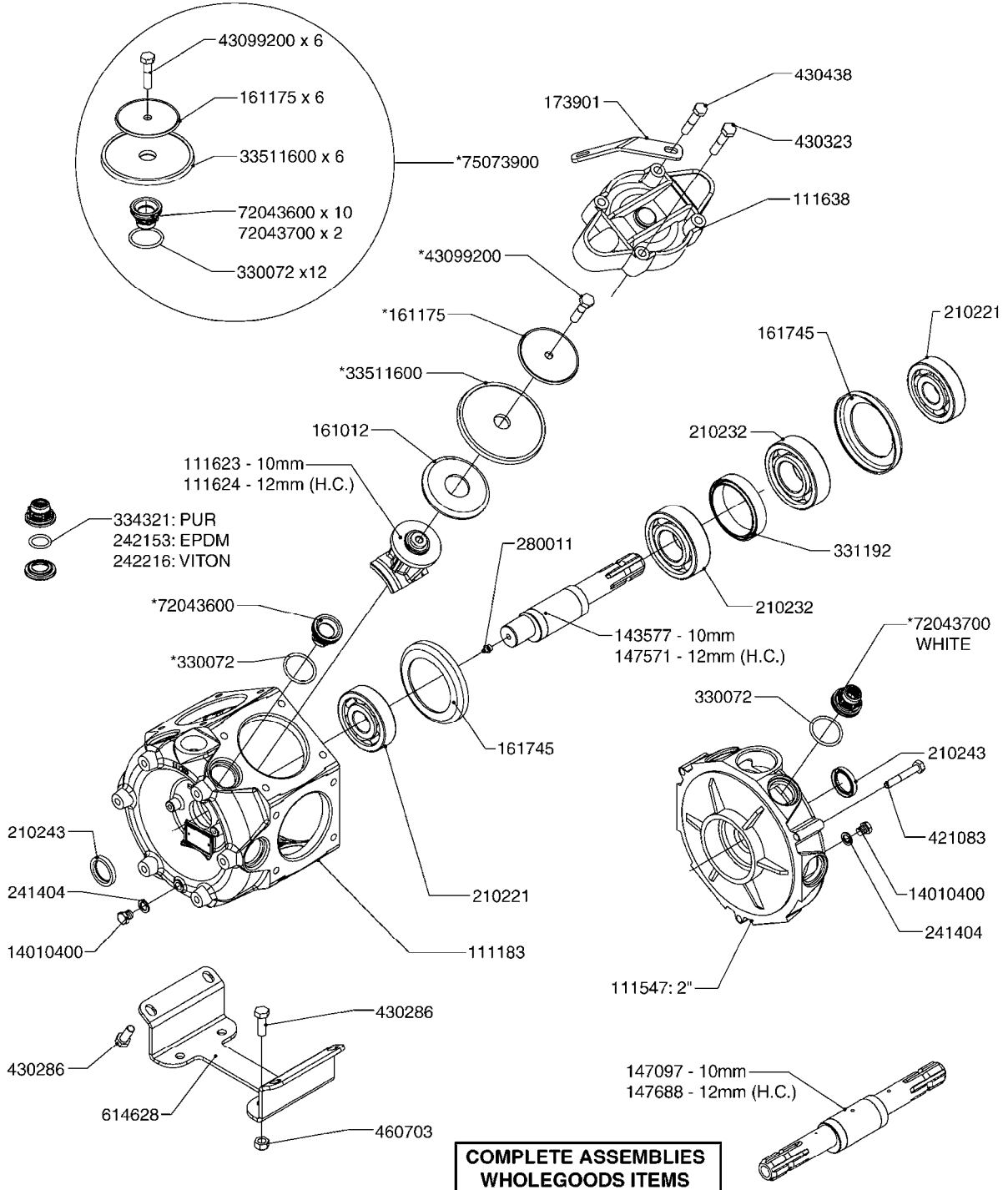




PUMP REPAIR KIT



COMPLETE PUMPS

- 821587 - 463/10 2" W/THROUGH SHAFT (540 RPM)
- 821649 - 463/12 2" (540 RPM H.C. OFFSET PORTS)
- 82166300 - 463/12 2" (540 RPM H.C. INLINE PORTS)

A300



PUMP - 463 W/ MOUNTING BASE
A300-HIN, 01:12:11

Page 1
Date 19.03.2013 9:42

parts-n°	order qty	description
111183	1	PUMP CASTING 460 (PAINTED)
111547	1	PUMP CASTING 462-2' (PAINTED)
111623	1	CONNECTING ROD 463/10MM
111624	1	CONNECTING ROD 463/12MM
111638	1	VALVE COVER 463 HC+1000 VERS.
143577	1	CRANK SHAFT F.363/462/463-10mm
147097	1	CRANK SHAFT 363-463/10 THROUGH
147571	1	CRANK SHAFT F.463-12mm
147688	1	CRANK SHAFT 462/12 THROUGH
161012	1	DIAPHRAGM BACKING DISC F. 463
161175	1	DIAPHRAGM DISC F. 463 PUMP
161745	1	METAL SPACER F.363/463
173901	1	LIFT STRAP F.PUMP 463
210221	1	BEARING BALL 6407
210232	1	BEARING BALL 6310
210243	1	SEAL OIL 35 X 47 X 7
241404	1	DOWTYSEAL 1/4"
242153	1	O-RING D26X4 EPDM
242216	1	O-RING VITON F/1202/1302/462
280011	1	GREASE NIPPLE 1/8' H TR
330072	1	O-RING D53,5/D45,5X4
331192	1	SPACER,
334321	1	O-RING POLY. 34.0x26.0x4.0
421083	1	BOLT HEX 8.8 DEL M10X65
430286	1	BOLT HEX 8.8 DEL M12X30 FT
430323	1	BOLT HEX 8.8 DEL M12X60
430438	1	BOLT HEX 8.8 DEL M12X65
460703	1	NUT HEX M12X1.75 LOCK
614628	1	FOOT FOR PUMP 460-463 PAINTED
821587	1	PUMP 463/10 THROUGH SHAFT TWNF
821649	1	PUMP 463/12/540 OFFSET PORTS
14010400	1	PLUG 1/4" BSP
33511600	1	DIAPHRAGM F. 463 PUMP POLY.'06
43099200	1	BOLT HEX SS M12 X 30 DIN933 A4
72043600	1	VALVE FOR 462/463
72043700	1	VALVE FOR 462/463 W.VENT HOLE
75073900	1	PUMP KIT F. 463
82166300	1	PUMP 463/12 2"SUC 540RPM