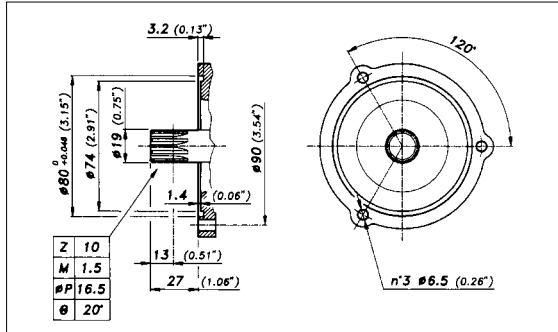


20 RTE



Pompe prodotte da 2009

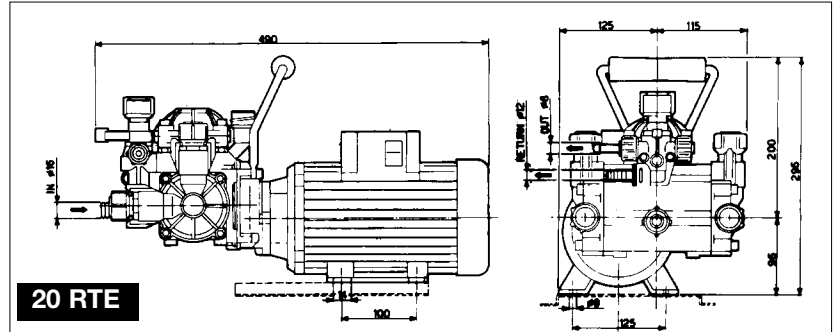
ALBERO MOTORE - ELECTRIC MOTOR SHAFT



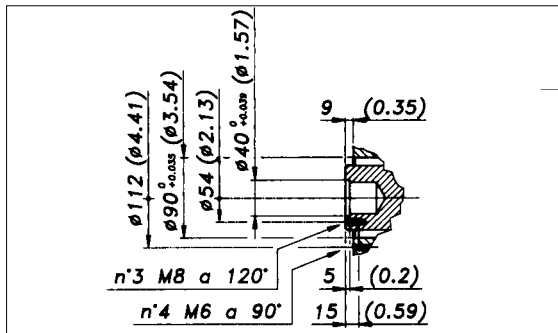
20 VF



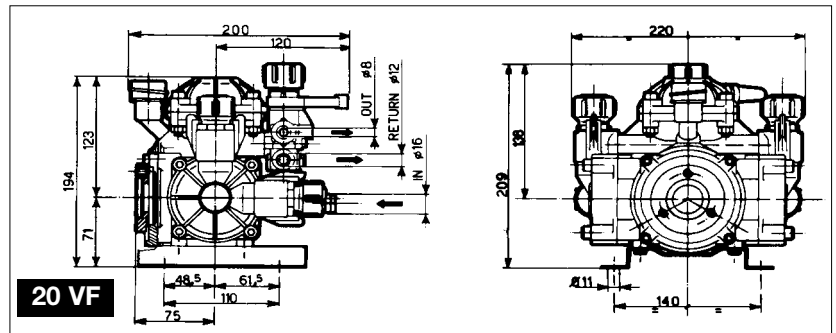
DIMENSIONI D'INGOMBRO - OVERALL DIMENSIONS



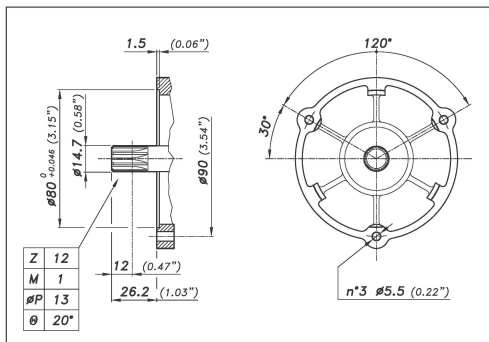
ALBERO POMPA - PUMP SHAFT



DIMENSIONI D'INGOMBRO - OVERALL DIMENSIONS



pompe prodotte fino 2008



COPPIA DI SERRAGGIO - TORQUE CHART

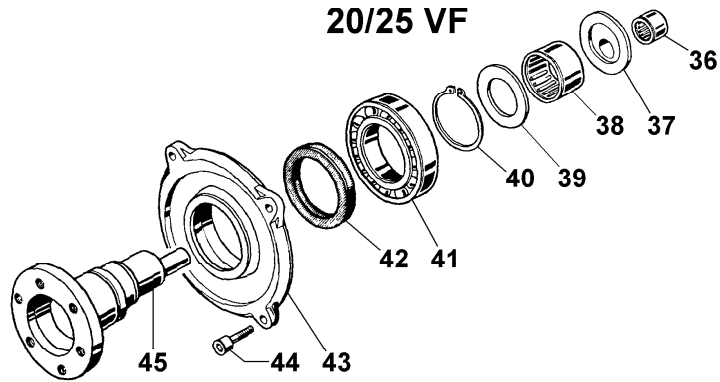
CODICE CODE	Q.TY	N. POS.	20 RTE - 20/25VF	
			N.m	Lbr.ft
86.1935.10.2	2	53	5	3.7
86.2303.00.2	2	61	10	7.4
86.2261.00.2	4	50	10	7.4
81.4525.00.2	3	52	5	3.7
86.2168.00.2	4	44	10	7.4
86.1943.90.2	2	78	5	3.7
86.2796.00.2	12	5	22	16.2
94.0048.43.2	2	7	5	3.7
86.2059.00.2	4	14	10	7.4

TOLLERANZA DI SERRAGGIO: 0 → - 10%
TOLERANCE ON TORQUE VALUE: 0 → - 10%

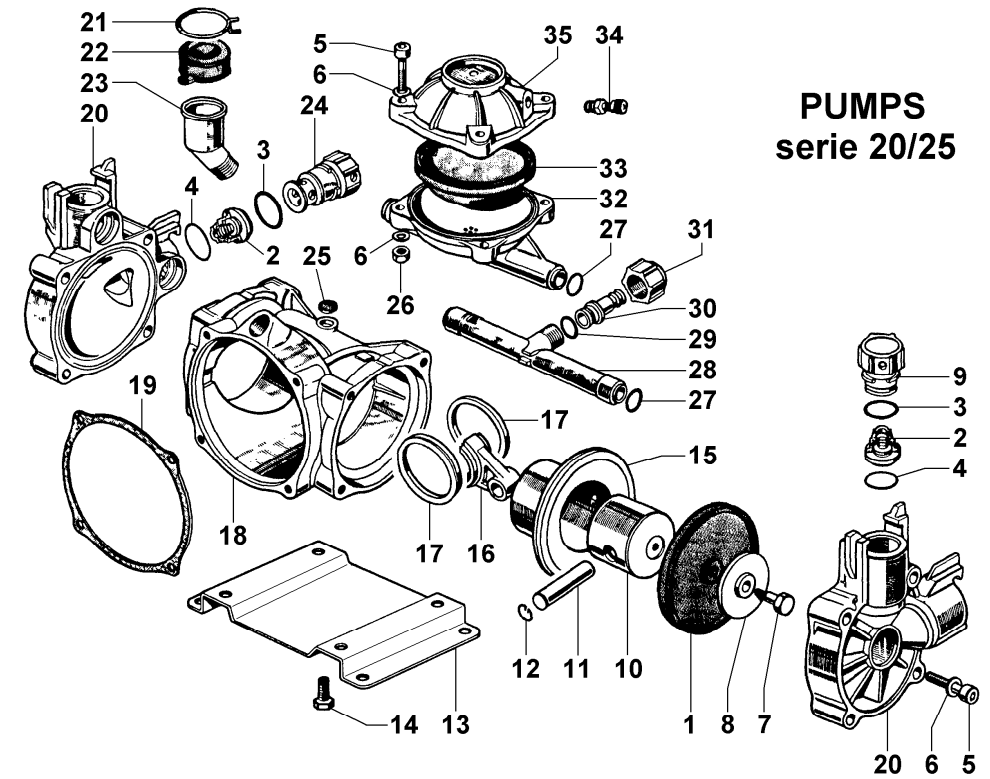
KIT RICAMBI - SPARES KIT 20 RTE - 20/25 VF

KIT	CODICE PART NUMBER	94.9881.97.3					94.9885.97.3					94.9870.97.3			94.9871.97.3			94.9826.97.3				
	DESCRIZIONE DESCRIPTION	KIT POMPA VF PUMP KIT VF					KIT POMPA RTE PUMP KIT RTE					VAM VALVES ASSY			MEMBRANE BUNA - N DIAPHRAGMS			MEMBRANE VITON DIAPHRAGMS				
POSIZIONE ESPLOSO POSITION NUMBER		42	27	3	4	19	57	56	27	3	4	19	2	3	4	1	27	33	1	27	33	3
QUANTITÀ NEL KIT QUANTITIES INCLUDED		1	4	4	4	1	1	1	4	4	4	1	4	4	4	2	4	1	2	4	1	4

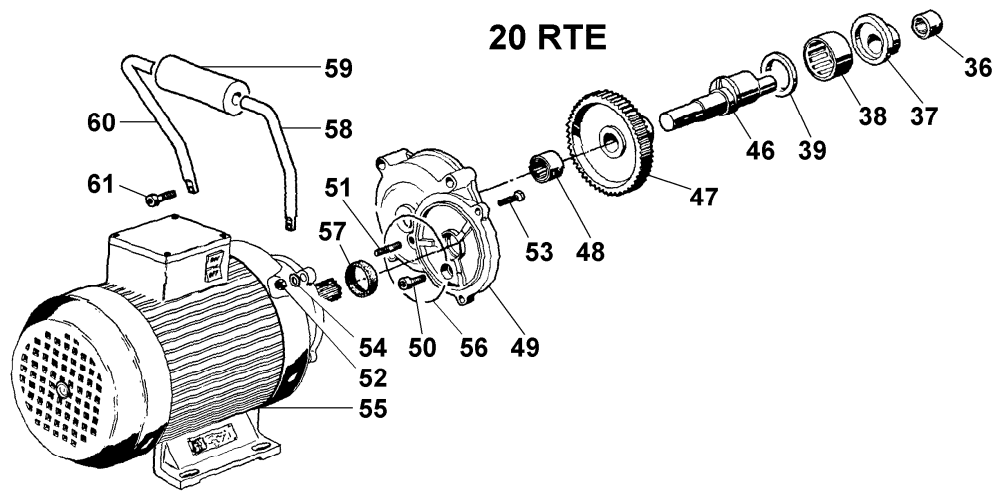
20/25 VF



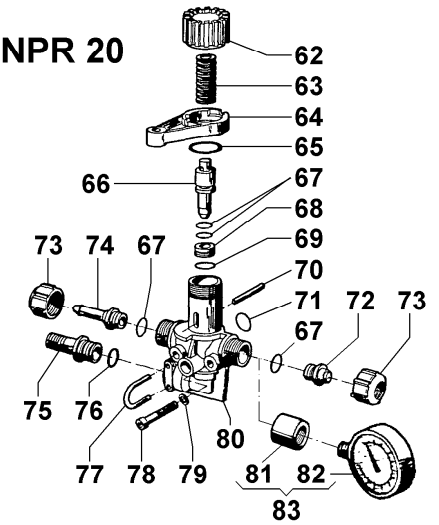
PUMPS
serie 20/25



20 RTE



NPR 20



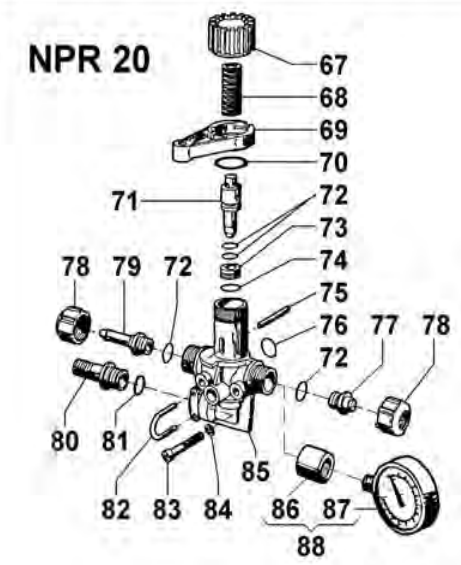
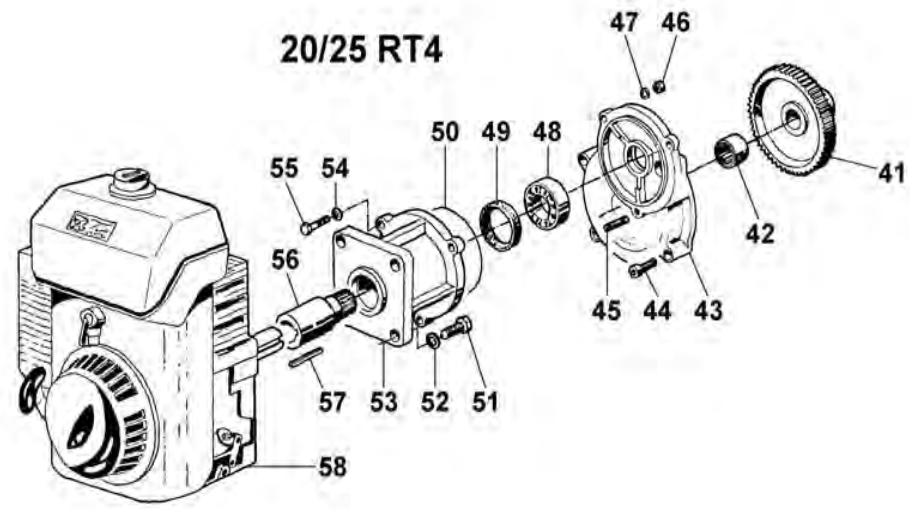
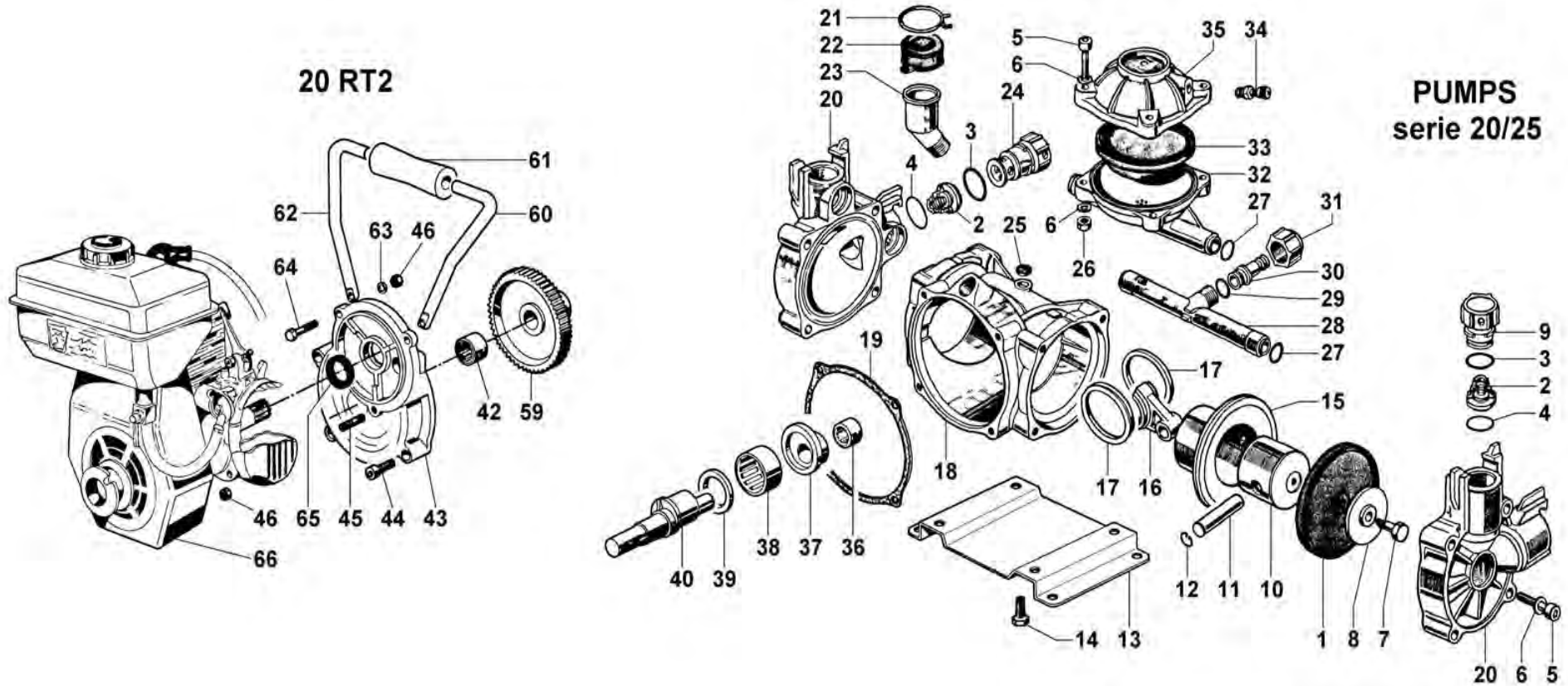
CATALOGO RICAMBI - SPARE PARTS LIST - LISTE DE PIÈCES

pumpe series 20 RTE, 20 VF e 25 VF

Pompe prodotte fino a 2008

POS.	CODICE - PART NO. - RÉF.	Q.TY	DENOMINAZIONE - DESCRIPTION - DESCRIPTION	POS.	CODICE - PART NO. - RÉF.	Q.TY	DENOMINAZIONE - DESCRIPTION - DESCRIPTION
1	94.0040.31.2	2	PISTON DIAPHRAGM	42	80.2178.10.2	1	OIL SEAL DIA.40x52x7
1	94.0040.33.2	2	VITON PISTON DIAPHRAGM	43	94.0216.09.2	1	BEARING HOUSING (VF)
2	94.9828.97.3	4	VALVE ASSY	44	86.2168.00.2	4	SCREW M6x22 UNI5931
3	80.3219.00.2	4	O-RING 3,0x25	45	94.0029.26.2	1	CRANKSHAFT VF
4	82.4154.00.2	4	GASKET DIA.30x24x1	46	94.0215.26.2	1	CRANKSHAFT RT4-RT2-RTE
5	86.2796.00.2	12	SCREW M8x40 UNI5931	47	94.0212.42.2	1	RIM Z=51 (RT4-RTE)
6	84.3685.00.2	16	WASHER DIA.8,4x15x1,5	48	81.2546.00.2	1	NEEDLE BEARING DHK 1412
7	94.0048.43.2	2	DIAPHRAGM LOCKING BOLT	49	94.0208.09.2	1	GEARBOX CASE (RT4-RT2-RTE)
8	94.0036.32.2	2	DISK	50	86.2261.00.2	4	SCREW M6x30 UNI5931
9	94.0242.98.2	2	OUTLET VALVE CAP	51	83.8006.00.2	1	STUD M5x18 UNI5914
10	94.0017.08.2	2	PISTON DIA.42 (20 serie)	52	81.4525.00.2	3	NUT M5 UNI5588
10	94.0016.08.2	2	PISTON DIA.48 (25 serie)	53	86.1935.10.2	2	SCREW M5x25 UNI5737
11	85.2004.00.2	2	PISTON PIN	54	84.3542.00.2	5	WASHER DIA.5,3x10x1
12	80.0003.00.2	4	RING DIA.10	55	83.2061.00.2	1	EL. MOT. HP1,25 SP 230V 20RTE
13	94.0022.61.2	1	MOUNTING RAIL	55	83.2061.50.2	1	ELECTRIC MOTOR HP1,25 THREE-PHASE
14	86.2059.00.2	4	SCREW M6x14 UNI5739	56	80.3210.64.2	1	O-RING 2,62x75,87
15	94.0007.01.2	2	PISTON SLEEVE DIA.42 (20 serie)	57	80.2073.00.2	1	OIL SEAL DIA.20x35x7
15	94.0015.01.2	2	PISTON SLEEVE DIA.48 (25 serie)	58	31.1324.61.2	1	LEFT HALF HANDLE
16	94.0008.09.2	2	CONROD	59	82.8410.00.2	1	KNOB
17	94.0047.76.2	2	CONROD RING	60	31.1325.61.2	1	RIGHT HALF HANDLE
18	94.0001.09.2	1	CRANKCASE	61	86.2303.00.2	2	SCREW M6x35 UNI5931
19	94.0080.72.2	1	CRANKCASE COVER GASKET	62	94.0203.32.2	1	KNOB
20	94.0002.09.2	2	PUMP HEAD	63	94.0073.48.2	1	SPRING
21	81.7537.00.2	1	CLAMP	64	94.0202.32.2	1	LEVER
22	94.0044.31.2	1	OIL FILLER CAP	65	80.3199.00.2	1	O-RING 2,62x21,89
23	94.0043.32.2	1	OIL FILLER	66	94.0204.32.2	1	POPPET
24	94.0243.98.2	2	INLET VALVE CAP	67	80.3174.00.2	4	O-RING 2,62x9,92
25	94.0075.66.2	1	CAP	68	05.0068.51.2	1	SEAT
26	81.4575.00.2	4	NUT M8 UNI5588	69	80.3056.00.2	1	O-RING 1,78x8,73
27	80.3181.00.2	4	O-RING 2,62x15,54	70	85.1045.00.2	1	PIN DIA.3x30
28	94.0014.32.2	1	INLET MANIFOLD	71	80.3217.00.2	1	O-RING 3,0x14
29	80.3060.00.2	1	O-RING 1,78x12,42	72	94.0201.32.2	1	PRESSURE REGULATOR PLUG
30	84.0521.00.2	1	90° ELBOW CONNECTOR DIA.20	73	82.0015.00.2	2	WING NUT G.1/2
31	82.0042.10.2	1	WING NUT G.3/4	74	84.1528.00.2	1	OUTLET CONNECTOR DIA.8
32	94.0004.09.2	1	DAMPER BODY	75	84.1551.00.2	1	RETURN CONNECTOR DIA.13
33	94.0041.31.2	1	DAMPER DIAPHRAGM	76	80.3178.00.2	1	O-RING 2,62x13,1
33	94.0041.33.2	1	VITON DAMPER DIAPHRAGM	77	94.0206.49.2	1	QUICK RELEASE PIN
34	86.1605.00.2	1	AIR VALVE	78	86.1943.90.2	2	SCREW M5x45 UNI5931
35	94.0003.09.2	1	DAMPER COVER	79	84.3542.00.2	2	WASHER DIA.5,3x10x1
36	81.2531.00.2	1	NEEDLE BEARING DHK 1312	80	94.0200.32.2	1	PRESSURE REGULATOR BODY
37	94.0026.32.2	1	CRANKSHAFT SPACER	81	94.0207.32.2	1	NIPPLES G.1/2 - G.1/4
38	81.2688.00.2	1	NEEDLE BEARING DHK 2520	82	83.0010.00.2	1	PRESSURE GAUGE
39	94.0027.32.2	1	SPACER	83	94.9849.97.3	1	PRESSURE GAUGE KIT
40	80.1264.00.2	1	RING DIA.35				
41	81.2837.00.2	1	BALL BEARING DIA.35x62x14				

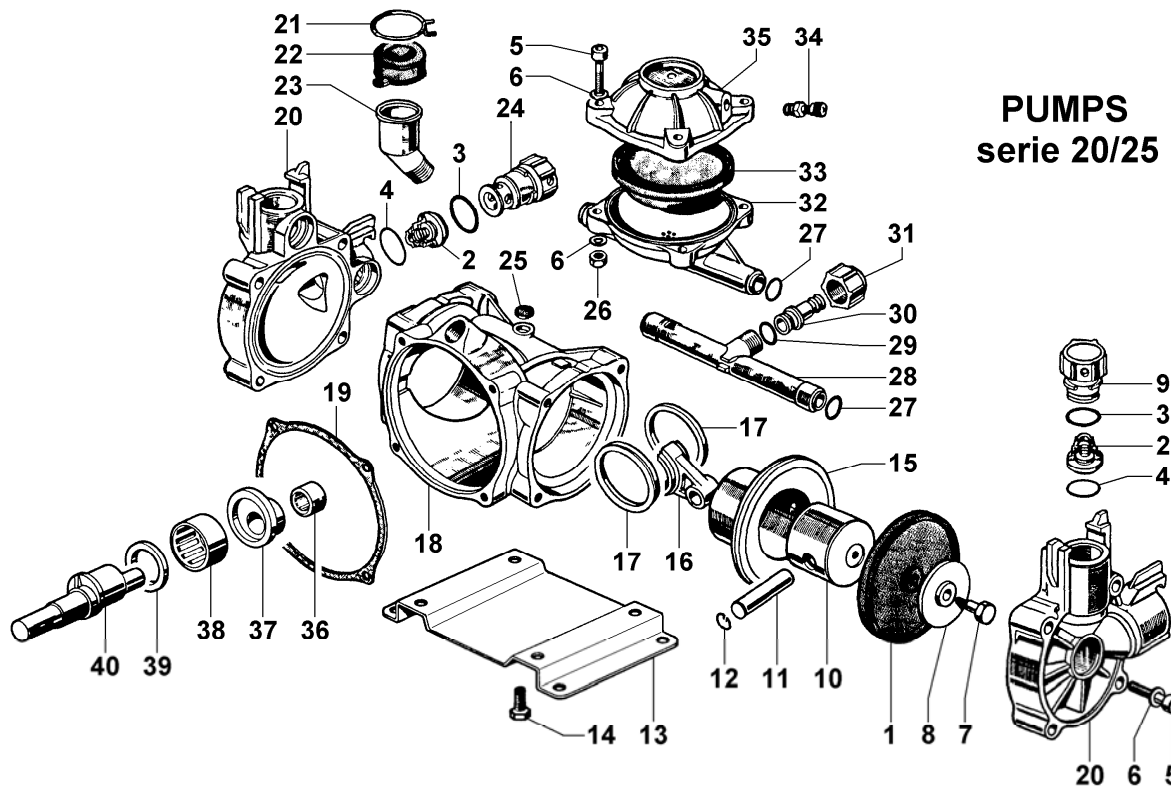
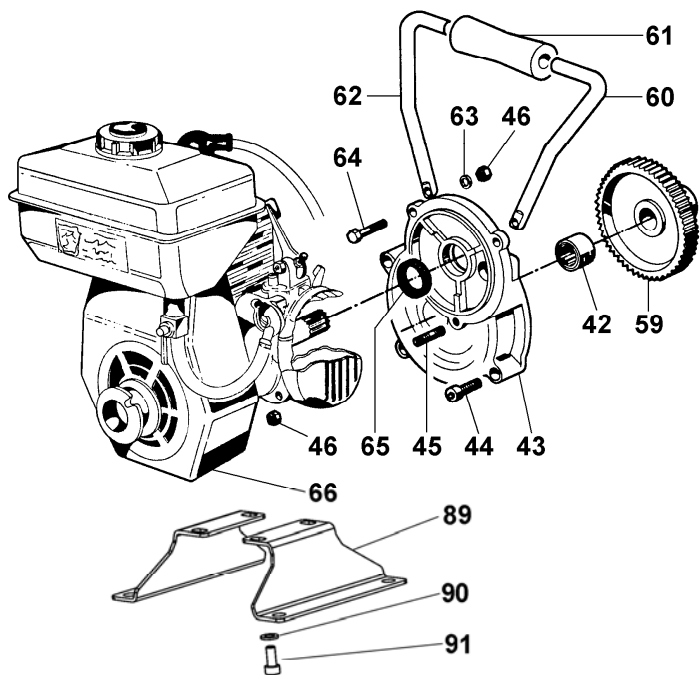
PUMPS
serie 20/25



Pompe serie 20 RT2 (M=1 fino 2008), 20 RT4 e 25 RT4
Pompe prodotte fino a 2008

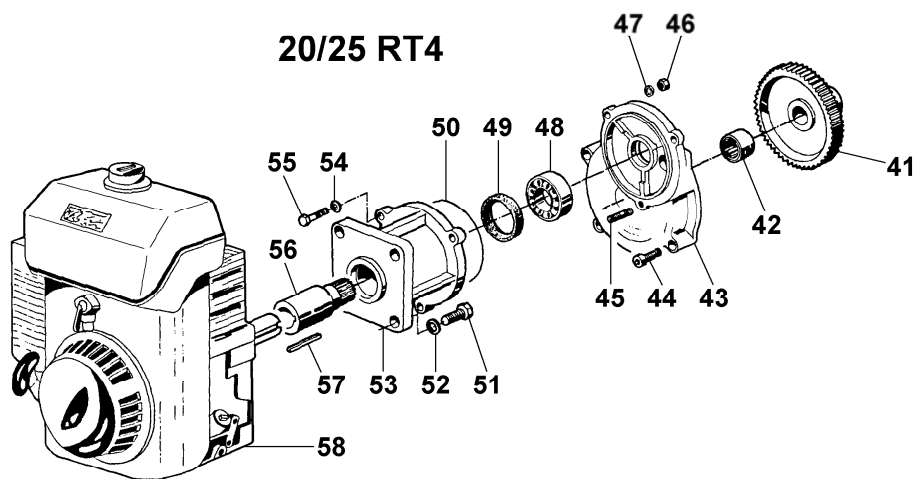
POS.	CODICE - PART NO. - RÉF.	Q.TY	DENOMINAZIONE - DESCRIPTION - DESCRIPTION	POS.	CODICE - PART NO. - RÉF.	Q.TY	DENOMINAZIONE - DESCRIPTION - DESCRIPTION
1	94.0040.31.2	2	MEMBRANA PISTONE	46	81.4525.00.2	3	DADO M5 UNI5588
1	94.0040.33.2	2	MEMBRANA PISTONE VITON	47	84.3542.00.2	2	ROSETTA D.5,3x10x1
2	94.9828.97.3	4	GR. VALVOLA A/M	48	81.2631.00.2	1	CUSCINETTO SFERE
3	80.3219.00.2	4	ANELLO OR 3,0x25	49	80.2117.00.2	1	ANELLO RADIALE
4	82.4154.00.2	4	GUARNIZIONE D.30x24x1	50	80.3210.64.2	1	ANELLO OR 2,62x75,87
5	86.2796.00.2	12	VITE TCEI M8x40 UNI5931	51	86.2566.00.2	4	VITE TE 5/16"-24UNF L=3/4"
6	84.3685.00.2	16	ROSETTA D.8,2x15x1,5	51	86.2622.00.2	4	VITE TE M8x22 UNI5739 (HONDA G100)
7	94.0048.43.2	2	VITE FISSAGGIO MEMBRANA	52	84.3685.00.2	4	ROSETTA D.8,2x15x1,5
8	94.0036.32.2	2	PIATTELLO MEMBRANA	53	94.0210.09.2	1	FLANGIA MOTORI TERMICI ("RT4")
9	94.0242.98.2	2	TAPPO MANDATA	54	84.3560.00.2	3	ROSETTA D.5,5x15x1,6
10	94.0017.08.2	2	PISTONE (serie 20)	55	86.1935.10.2	2	VITE TE M5x25 UNI5737
10	94.0016.08.2	2	PISTONE (serie 25)	56	94.0211.42.2	1	PIGNONE Z=10 (SAE 3/4")
11	85.2004.00.2	2	SPINOTTO D.10x35	56	94.0228.42.2	1	PIGNONE Z=10 (HONDA G100-S)
12	80.0003.00.2	4	ANELLO D.10 PER FORO	56	94.0218.42.2	1	PIGNONE Z=10 (HONDA G100-Q)
13	94.0022.61.2	1	PIEDINO	57	80.6436.00.2	1	LINGUETTA 4,75x5x30
14	86.2059.00.2	4	VITE TE M6x14 UNI5739	57	80.6445.00.2	1	LINGUETTA 5x5x30 (HONDA G100-S)
15	94.0007.01.2	2	CAMICIA (serie 20)	58	83.2482.00.2	1	MOTORE TERMICO 4T TECUMSEH SAE 3/4"
15	94.0015.01.2	2	CAMICIA (serie 25)	58	83.2362.00.2	1	MOTORE TERMICO 4T B.& S. SAE 3/4"
16	94.0008.09.2	2	BIELLA SINGOLA	59	94.0213.42.2	1	INGRANAGGIO Z=80 ("RT2")
17	94.0047.76.2	2	ANELLO SERRAGGIO BIELLA	60	31.1325.61.2	1	SEMIMANICO DESTRO
18	94.0001.09.2	1	CARTER POMPA	61	82.8410.00.2	1	MANOPOLA
19	94.0080.72.2	1	GUARNIZIONE COPERCHIO CARTER	62	31.1324.61.2	1	SEMIMANICO SINISTRO
20	94.0002.09.2	2	TESTATA POMPA	63	84.3539.00.2	5	ROSETTA D.5,3x10x1
21	81.7537.00.2	1	FASCETTA D.33	64	86.1943.90.2	2	VITE TCEI M5x45 UNI5931
22	94.0044.31.2	1	COPERCHIO SERBATOIO	65	80.2035.00.2	1	ANELLO RADIALE
23	94.0043.32.2	1	SERBATOIO OLIO	66	83.2188.30.2	1	MOTORE TERMICO 2T CM46 (M1 Z=12)
24	94.0243.98.2	2	TAPPO ASPIRAZIONE	66	83.2100.40.2	1	MOTORE TERMICO 2T OLEOMAC (M1 Z=12)
25	94.0075.66.2	1	PASTIGLIA APPOGGIO	67	94.0203.32.2	1	POMOLO DI REGOLAZIONE
26	81.4575.00.2	4	DADO M8 UNI5588	68	94.0073.48.2	1	MOLLA
27	80.3181.00.2	4	ANELLO OR 2,62x15,54	69	94.0202.32.2	1	LEVA SCARICO RAPIDO
28	94.0014.32.2	1	COLLETTORE	70	80.3199.00.2	1	ANELLO OR 2,62x21,89
29	80.3060.00.2	1	ANELLO OR 1,78x12,42	71	94.0204.32.2	1	OTTURATORE
30	84.0521.00.2	1	RACCORDO CURVO D.20	72	80.3174.00.2	4	ANELLO OR 2,62x9,92
31	82.0042.10.2	1	GALLETTO G.3/4	73	05.0068.51.2	1	SEDE VALVOLA
32	94.0004.09.2	1	ACCUMULATORE INFERIORE	74	80.3056.00.2	1	ANELLO OR 1,78x8,73
33	94.0041.31.2	1	MEMBRANA ACCUMULATORE	75	85.1045.00.2	1	SPINA CILINDRICA D.3x30
33	94.0041.33.2	1	MEMBRANA ACCUMULATORE VITON	76	80.3217.00.2	1	ANELLO OR 3,0x14
34	86.1605.00.2	1	VALVOLA ARIA	77	94.0201.32.2	1	TAPPO
35	94.0003.09.2	1	ACCUMULATORE SUPERIORE	78	82.0015.00.2	2	GALLETTO G.1/2
36	81.2531.00.2	1	CUSCINETTO A RULLINI	79	84.1528.00.2	1	RACCORDO MANDATA D.8
37	94.0026.32.2	1	DISTANZIALE	80	84.1551.00.2	1	RACCORDO SCARICO D.13
38	81.2688.00.2	1	CUSCINETTO A RULLINI	81	80.3178.00.2	1	ANELLO OR 2,62x13,1
39	94.0027.32.2	1	DISTANZIALE	82	94.0206.49.2	1	BAIONETTA
40	94.0215.26.2	1	ALBERO ECCENTRICO "RT2"- "RT4"	83	86.1943.90.2	2	VITE TCEI M5x45 UNI5931
41	94.0212.42.2	1	INGRANAGGIO Z=51 ("RT4")	84	84.3542.00.2	2	ROSETTA D.5,3x10x1
42	81.2546.00.2	1	CUSCINETTO A RULLINI	85	94.0200.32.2	1	CORPO VALVOLA REGOLAZIONE
43	94.0208.09.2	1	CARTER RIDUTTORE	86	94.0207.32.2	1	MANICOTTO G.1/2-G.1/4
44	86.2261.00.2	4	VITE TCEI M6x30 UNI5931	87	83.0010.00.2	1	MANOMETRO
45	83.8006.00.2	1	PRIGIONIERO M5x18 UNI5914	88	94.9849.97.3	1	KIT MANOMETRO NPR 20

20 RT2

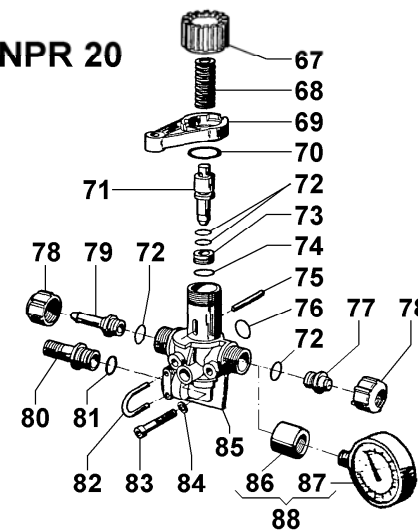


PUMPS
serie 20/25

20/25 RT4



NPR 20



Pompe serie 20 RT2 (M=1.25 da 2009), 20 RT4 e 25 RT4
Pompe prodotte da 2009

POS.	CODICE - PART NO. - RÉF.	Q.TY	DENOMINAZIONE - DESCRIPTION - DESCRIPTION	POS.	CODICE - PART NO. - RÉF.	Q.TY	DENOMINAZIONE - DESCRIPTION - DESCRIPTION
1	94.0040.31.2	2	MEMBRANA PISTONE	48	81.2631.00.2	1	CUSCINETTO SFERE
1	94.0040.33.2	2	MEMBRANA PISTONE VITON	49	80.2117.00.2	1	ANELLO RADIALE
2	94.9828.97.3	4	GR. VALVOLA A/M	50	80.3210.64.2	1	ANELLO OR 2,62x75,87
3	80.3219.00.2	4	ANELLO OR 3,0x25	51	86.2566.00.2	4	VITE TE 5/16"-24UNF L=3/4"
4	82.4154.50.2	4	GUARNIZIONE D.30x24x1	51	86.2622.00.2	4	VITE TE M8x22 UNI5739 (HONDA G100)
5	86.2796.00.2	12	VITE TCEI M8x40 UNI5931	52	84.3685.00.2	4	ROSETTA D.8,2x15x1,5
6	84.3685.00.2	16	ROSETTA D.8,2x15x1,5	53	94.0210.09.2	1	FLANGIA MOTORI TERMICI ("RT4")
7	94.0048.43.2	2	VITE FISSAGGIO MEMBRANA	54	84.3560.00.2	3	ROSETTA D.5,5x15x1,6
8	94.0036.32.2	2	PIATTELLO MEMBRANA	55	86.1935.10.2	2	VITE TE M5x25 UNI5737
9	94.0242.98.2	2	TAPPO MANDATA	56	94.0251.42.2	1	PIGNONE Z=10 (SAE 3/4")
10	94.0017.08.2	2	PISTONE (serie 20)	56	94.0252.42.2	1	PIGNONE Z=10 (HONDA G100-S)
10	94.0016.08.2	2	PISTONE (serie 25)	56	94.0253.42.2	1	PIGNONE Z=10 (HONDA G100-Q)
11	85.2004.00.2	2	SPINOTTO D.10x35	57	80.6436.00.2	1	LINGUETTA 4,75x5x30
12	80.0003.00.2	4	ANELLO D.10 PER FORO	57	80.6445.00.2	1	LINGUETTA 5x5x30 (HONDA G100-S)
13	94.0022.61.2	1	PIEDINO	58	83.2482.00.2	1	MOTORE TERMICO 4T TECUMSEH SAE 3/4"
14	86.2059.00.2	4	VITE TE M6x14 UNI5739	58	83.2362.00.2	1	MOTORE TERMICO 4T B.& S. SAE 3/4"
15	94.0007.01.2	2	CAMICIA (serie 20)	59	94.0248.42.2	1	INGRANAGGIO Z=64 ("RT2")
15	94.0015.01.2	2	CAMICIA (serie 25)	60	31.1325.61.2	1	SEMIMANICO DESTRO
16	94.0008.09.2	2	BIELLA SINGOLA	61	82.8410.00.2	1	MANOPOLA
17	94.0047.76.2	2	ANELLO SERRAGGIO BIELLA	62	31.1324.61.2	1	SEMIMANICO SINISTRO
18	94.0001.09.2	1	CARTER POMPA	63	84.3539.00.2	5	ROSETTA D.5,3x10x1
19	94.0080.72.2	1	GUARNIZIONE COPERCHIO CARTER	64	86.1943.90.2	2	VITE TCEI M5x45 UNI5931
20	94.0002.09.2	2	TESTATA POMPA	65	80.2039.00.2	1	ANELLO RADIALE
21	81.7537.00.2	1	FASCETTA D.33	66	83.4260.00.2	1	MOTORE TERMICO 2T CM46 Z=9
22	94.0044.31.2	1	COPERCHIO SERBATOIO	67	94.0203.32.2	1	POMOLO DI REGOLAZIONE
23	94.0043.32.2	1	SERBATOIO OLIO	68	94.0073.48.2	1	MOLLA
24	94.0243.98.2	2	TAPPO ASPIRAZIONE	69	94.0202.32.2	1	LEVA SCARICO RAPIDO
25	94.0075.66.2	1	PASTIGLIA APPOGGIO	70	80.3199.00.2	1	ANELLO OR 2,62x21,89
26	81.4575.00.2	4	DADO M8 UNI5588	71	94.0204.32.2	1	OTTURATORE
27	80.3181.00.2	4	ANELLO OR 2,62x15,54	72	80.3175.00.2	4	ANELLO OR 2,62x10,78
28	94.0014.32.2	1	COLLETTORE	73	05.0068.51.2	1	SEDE VALVOLA
29	80.3060.00.2	1	ANELLO OR 1,78x12,42	74	80.3056.00.2	1	ANELLO OR 1,78x8,73
30	84.0521.00.2	1	RACCORDO CURVO D.20	75	85.1045.00.2	1	SPINA CILINDRICA D.3x30
31	82.0042.10.2	1	GALLETTO G.3/4	76	80.3217.00.2	1	ANELLO OR 3,0x14
32	94.0004.09.2	1	ACCUMULATORE INFERIORE	77	94.0201.32.2	1	TAPPO
33	94.0041.31.2	1	MEMBRANA ACCUMULATORE	78	82.0015.00.2	2	GALLETTO G.1/2
33	94.0041.33.2	1	MEMBRANA ACCUMULATORE VITON	79	84.1528.00.2	1	RACCORDO MANDATA D.8
34	86.1605.00.2	1	VALVOLA ARIA	80	84.1551.00.2	1	RACCORDO SCARICO D.13
35	94.0003.09.2	1	ACCUMULATORE SUPERIORE	81	80.3213.50.2	1	ANELLO OR 3.0x11
36	81.2531.00.2	1	CUSCINETTO A RULLINI	82	94.0206.49.2	1	BAIONETTA
37	94.0026.32.2	1	DLSTANZIALE	83	86.1943.90.2	2	VITE TCEI M5x45 UNI5931
38	81.2688.00.2	1	CUSCINETTO A RULLINI	84	84.3542.00.2	2	ROSETTA D.5,3x10x1
39	94.0027.32.2	1	DLSTANZIALE	85	94.0200.32.2	1	CORPO VALVOLA REGOLAZIONE
40	94.0215.26.2	1	ALBERO ECCENTRICO "RT2"- "RT4"	86	94.0207.32.2	1	MANICOTTO G.1/2-G.1/4
41	94.0212.42.2	1	INGRANAGGIO Z=51 ("RT4")	87	83.0010.00.2	1	MANOMETRO
42	81.2546.00.2	1	CUSCINETTO A RULLINI	88	94.9849.97.3	1	KIT MANOMETRO NPR 20
43	94.0250.09.2	1	CARTER RIDUTTORE	89	94.0379.61.2	2	PIEDE
44	86.2261.00.2	4	VITE TCEI M6x30 UNI5931	90	84.3585.00.2	4	ROSETTA D.6 UNI 6592
45	83.8006.00.2	1	PRIGIONIERO M5x18 UNI5914	91	86.2059.00.2	4	VITE TE M6x14 UNI 5739
46	81.4525.00.2	3	DADO M5 UNI5588				
47	84.3542.00.2	2	ROSETTA D.5,3x10x1				