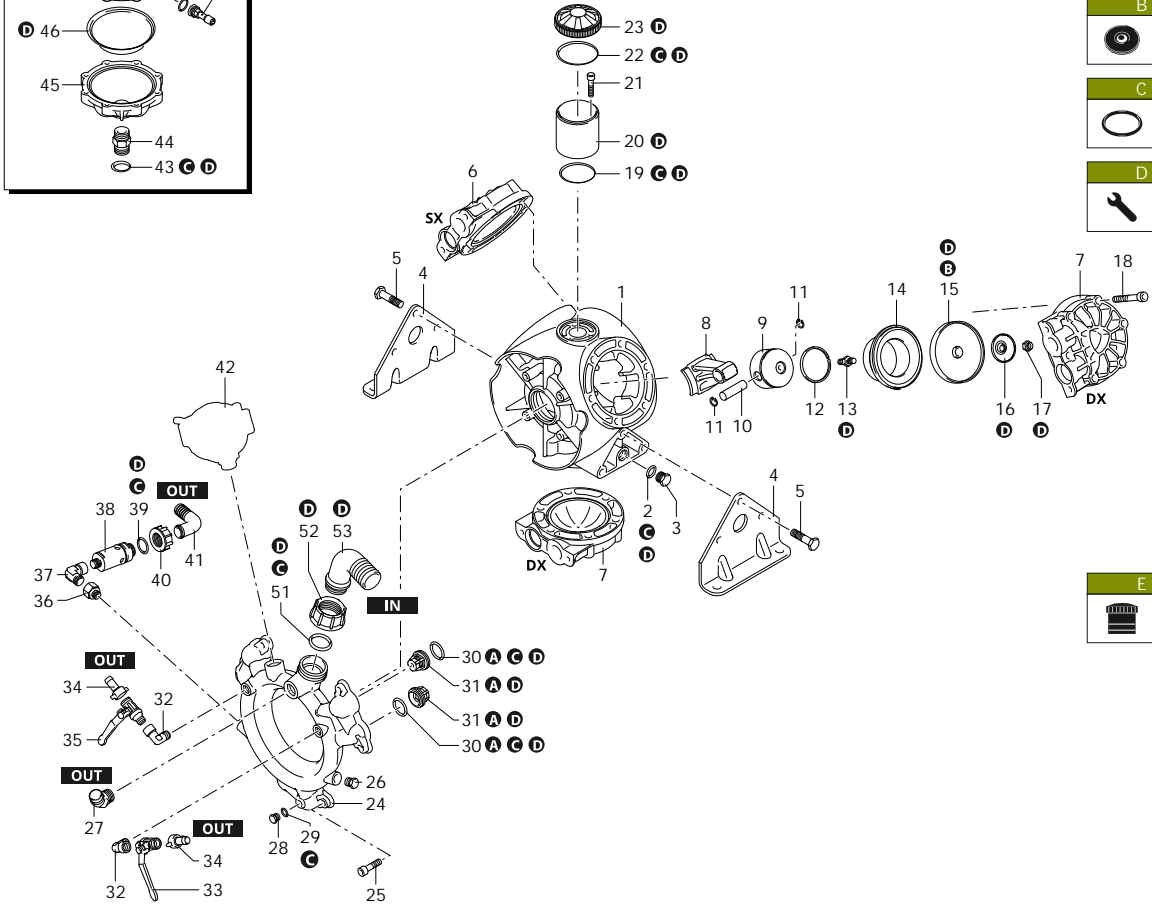
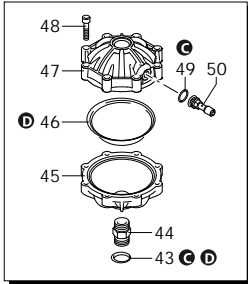




# BHA 130

32124 BHA 130 AP C/C - BlueFlex



AR\_01\_028\_v01

Customer: AR  
Customer Code:



SAE 30  
2,400 Kg

Revision: 1

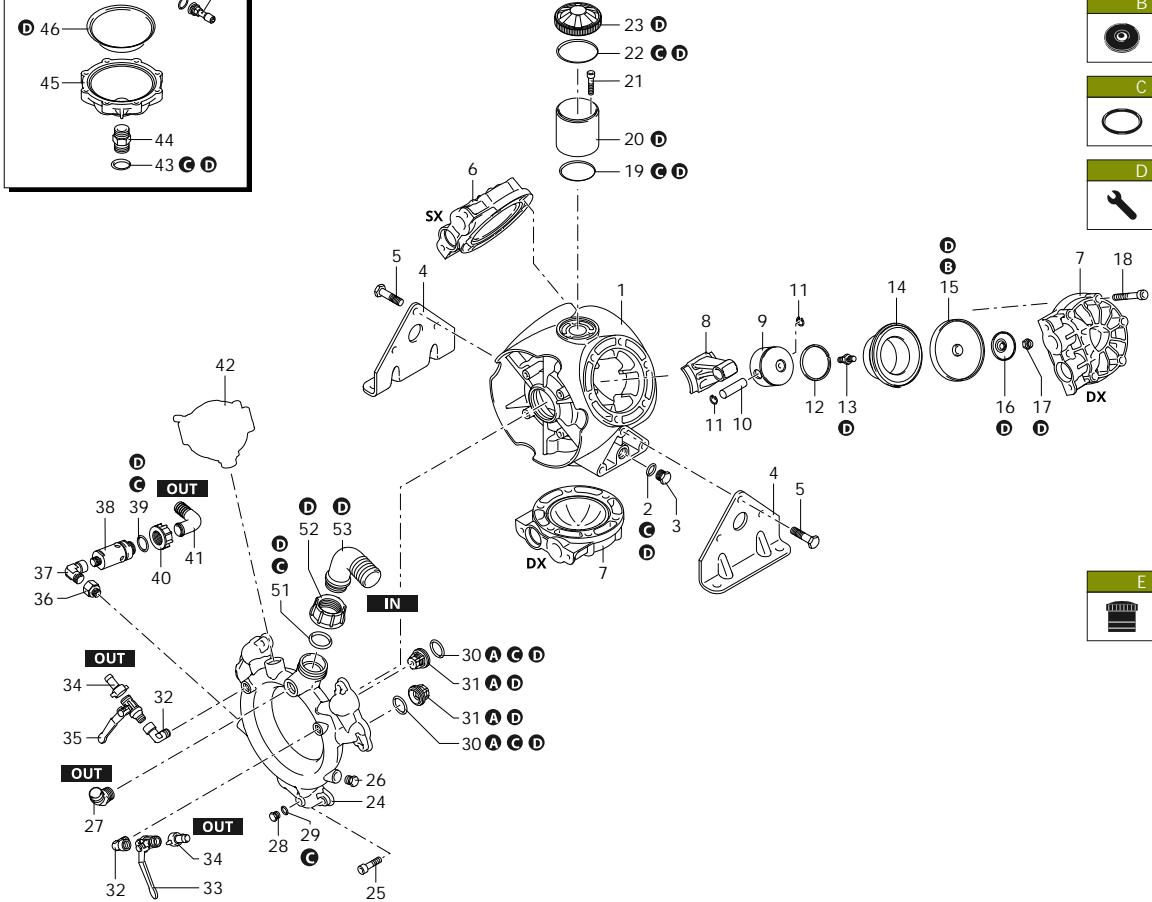
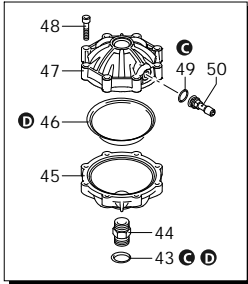
Date: 26/08/2023

Code	Description	Q	Note
1	2240011 Pump body	1	
2	180101 O-ring	Ø 17,5x2	2 Lubricate with motor oil
3	820361 Plug	1/2" G brass	2
4	2240190 Foot		2
5	540100 Screw	TE M12x40	6 C=50Nm / Loxeal 55-14
6	2240453 Head	sx	1
7	2240452 Head	dx	2
8	2240090 Connecting-rod		3
9	2240550 Piston	Ø 76	3
10	2240580 Pin		3
11	160691 Ring	seeger Øi 18	6
12	2240570 Piston ring		3
13	2240100 Hub pin		3 C=30Nm / Loxeal 83-21
14	2240560 Sleeve		3
15	2240081 Diaphragm	BlueFlex - Øe 120	3
16	580090 Plate		3
17	2240110 Nut	M10	3 C=25Nm
18	2240470 Screw	TCEI M12x70	18 C=50Nm
19	2240270 O-ring	Ø 26,65x2,62	1 Lubricate with motor oil
20	2240070 Tank		1
21	540290 Screw	TCEI M8x25	3 C=23Nm
22	1040060 O-ring	Ø 72,69x2,62	1 Lubricate Molykote Longterm W2
23	1800060 Plug	black	1
24	2240461 Line	intake/delivery	1
25	650330 Screw	TCEI M10x35	6 C=40Nm
26	880530 Plug	3/8" G	1 C=20Nm
27	851650 Elbow		1 Loxeal 55-14
28	880581 Plug	1/4" G	1 C=20Nm / Loxeal 24-18
29	820510 O-ring	Ø 10,82x1,78	1
30	680070 O-ring	Ø 31,5x4,25	6 Lubricate with motor oil
31	2249050 Valve		6
32	900210 Fitting	3/8" G (M-F)	2 Loxeal 83-21
33	130491 Valve	3/8" G - 1/2" G (M-M)	1 C=20Nm / Loxeal 55-14
34	110130 Ring nut	1/2" G	2
35	130492 Valve	3/8" G - 1/2" G (M-M)	1 C=20Nm / Loxeal 55-14
36	881461 Threaded adapter	3/8" G - 1/2" G	1 C=20Nm / Loxeal 83-21
37	881560 Fitting	1/2" G (M-F)	1 C=20Nm / Loxeal 83-21
38	1609002 Safety valve	50 bar	1 C=10Nm / Loxeal 24-18
39	880831 O-ring	Ø 15,54x2,62 Viton	1 Lubricate Molykote G-807
40	550450 Ring nut	3/4" G	1
41	550460 Elbow	Ø 18	1
42	43071 Air chamber	BlueFlex	1
43	720030 O-ring	Ø 22,22x2,62	1 Lubricate Molykote G-807
44	2240490 Fitting		1 C=20Nm / Loxeal 24-18
45	2240481 Semi air chamber	lower	1 Loxeal 83-21
46	550194 Diaphragm	BlueFlex - Øe 110	1
47	620234 Semi air chamber	upper	1



# BHA 130

32124 BHA 130 AP C/C - BlueFlex



Code	Description	Q	Note
48	380410 Screw	TCEI M8x40	8 C=20Nm
49	650542 Gasket		1 Lubricate with motor oil
50	180020 Air valve		1 C=3Nm / Loxeal 55-14
51	250310 O-ring	Ø 36,14x2,62	1 Lubricate with motor oil
52	540540 Ring nut	1" 3/4 G	1
53	540550 Elbow	Ø 40	1
A	2445 Valve kit		1
B	43204 Diaphragms kit	BlueFlex	1
C	2446 O-ring kit		1
D	47424 Maintenance repair kit	BlueFlex	1
E	47199 Tank kit		1

AR\_01\_028\_v01

Customer: AR  
Customer Code:



SAE 30  
2,400 Kg

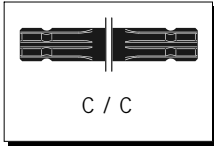
Revision: 1

Date: 26/08/2023

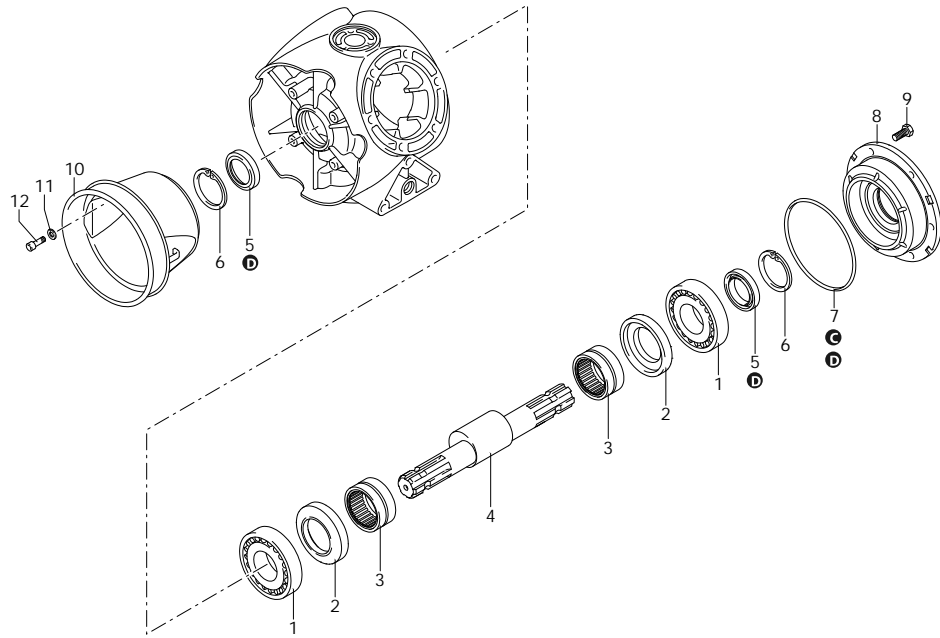


# BHA 130

32124 BHA 130 AP C/C - BlueFlex



C / C



Code	Description	Q	Note
1	2240430 Bearing	2	Press Mount
2	2240121 Ring	2	Connecting-rod
3	850320 Bearing	2	
4	2240173 Shaft	1	BE marked
5	2240150 Ring	2	seal
6	2240160 Ring	2	seeger Øi 62
7	2240290 O-ring	1	Ø 152,7x2,62
8	2240020 Flange	1	Press Mount
9	160670 Screw	6	TE M10x25
10	1500470 Cardan protection	1	Ø 239 mm
11	390311 Washer	3	
12	850250 Screw	3	TCEI M8x12
A	2445 Valve kit	1	
B	43204 Diaphragms kit	1	BlueFlex
C	2446 O-ring kit	1	
D	47424 Maintenance repair kit	1	BlueFlex

AR\_03\_047\_v01

Customer: AR  
Customer Code:



SAE 30  
2,400 Kg

Revision: 1

Date: 26/08/2023